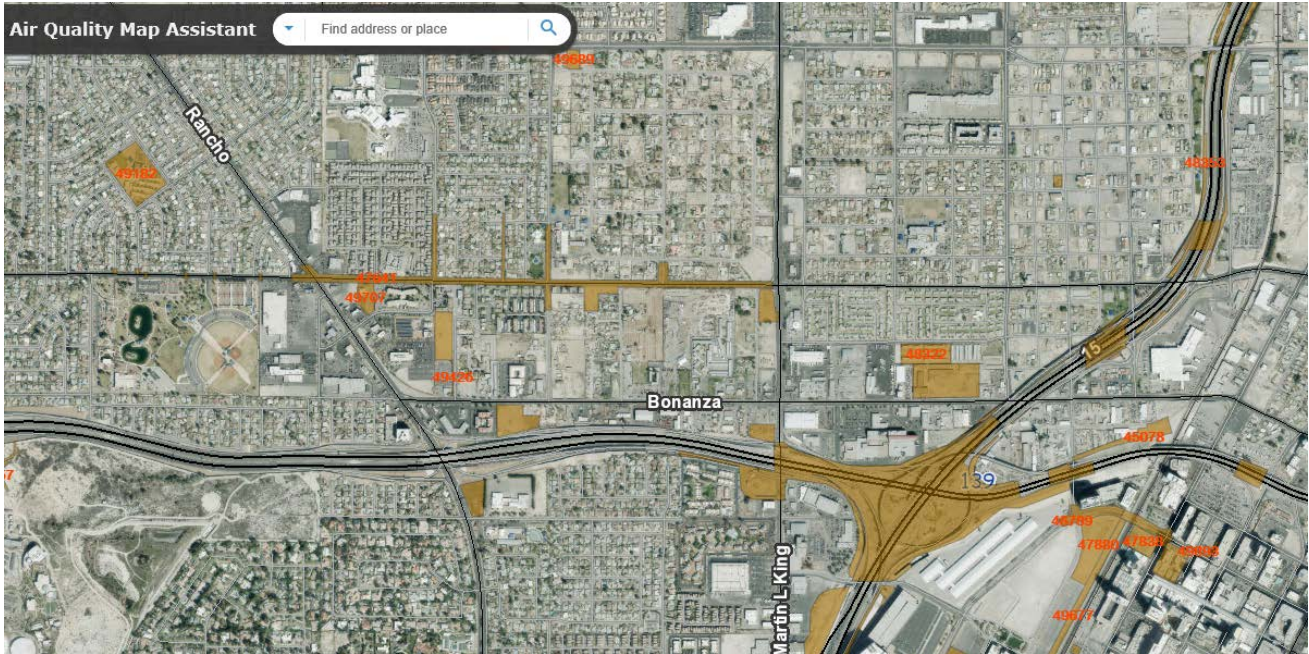


Welcome to the Air Quality Map Assistant

- This program functions similarly to OpenWeb. However, it includes an additional feature, the dust permit layer.
- The dust permit layer shows all of the areas covered under active Dust Control Operating Permits (DCOPs).
- The layer is marked in brown as shown below.
- The dust permit layer is updated approximately every two weeks.
- Prior to submitting a DCOP application, please review the area on this program to verify that it is not already permitted. Air Quality does not allow multiple permittees to pull DCOPs for the same area.



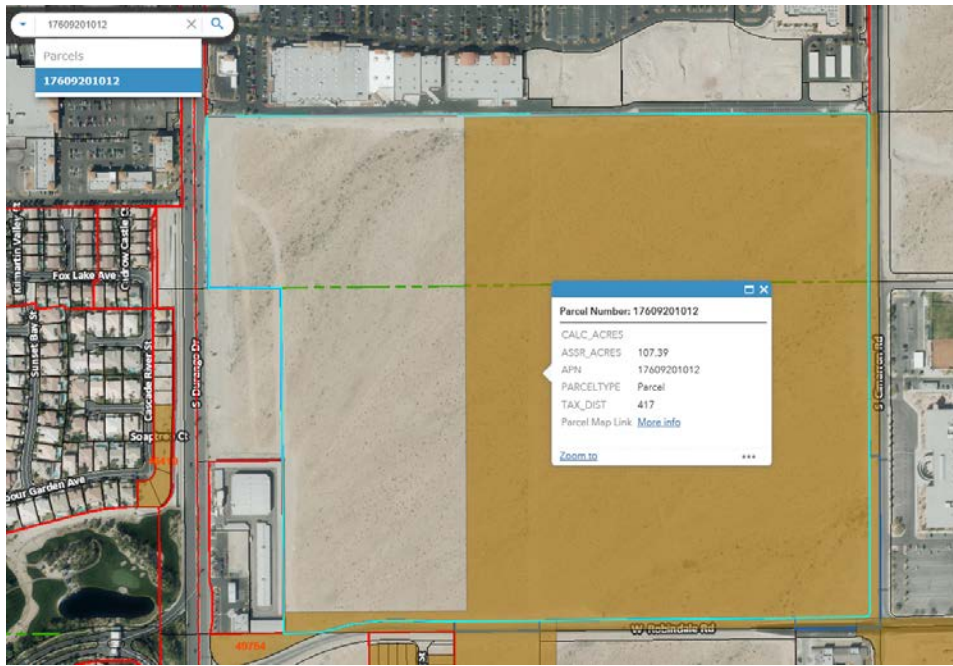
Using the Search Feature

- Begin by entering a parcel number, Dust Control Operating Permit (DCOP) number, address, or cross streets in the search box.

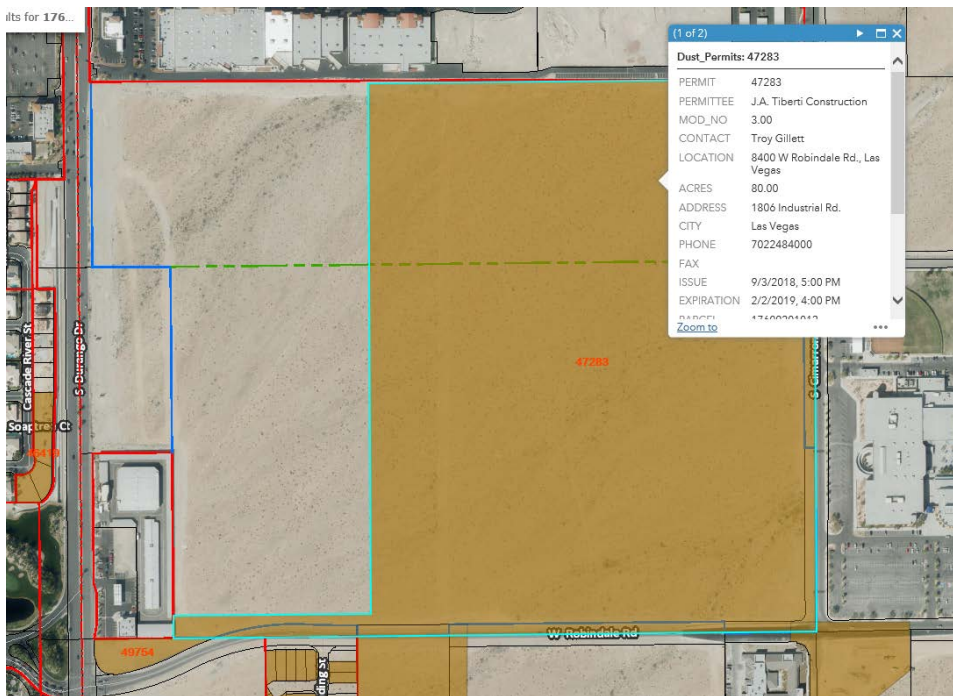
NOTE: Do not include dashes when entering the parcel number.



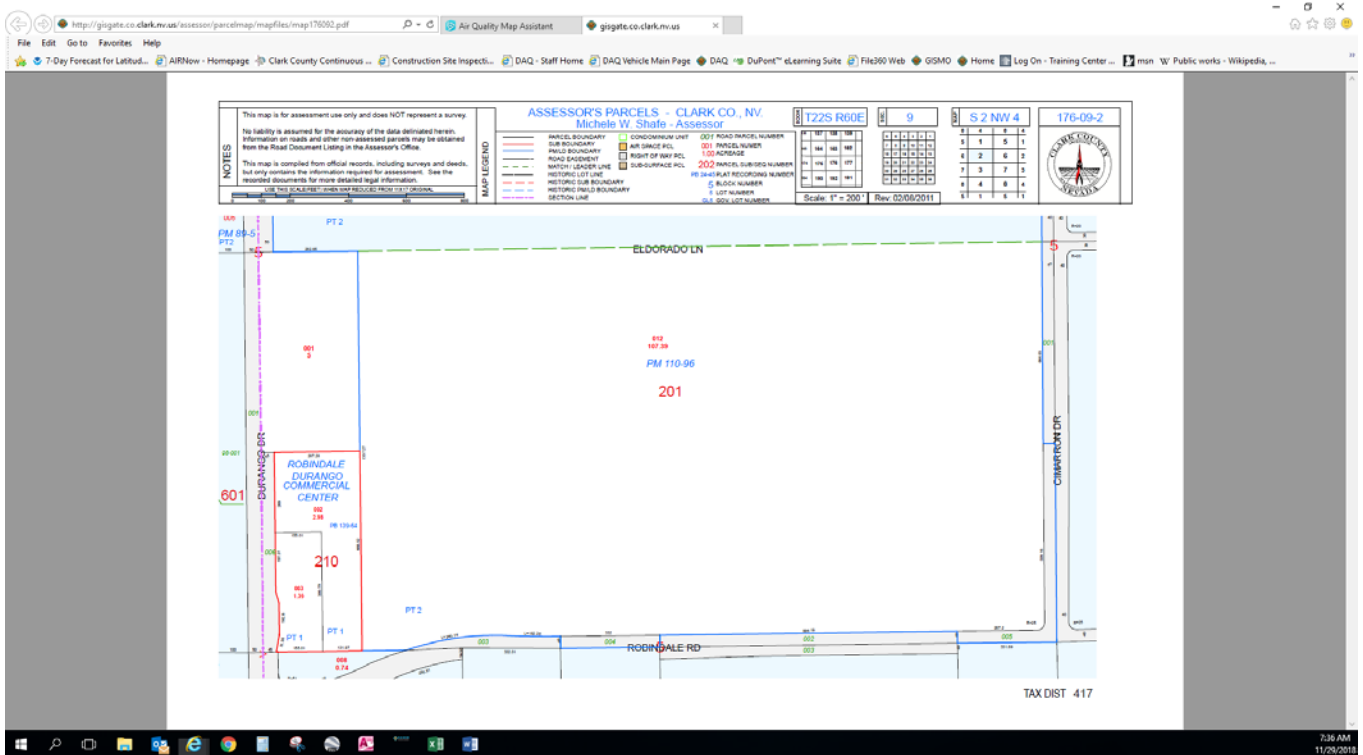
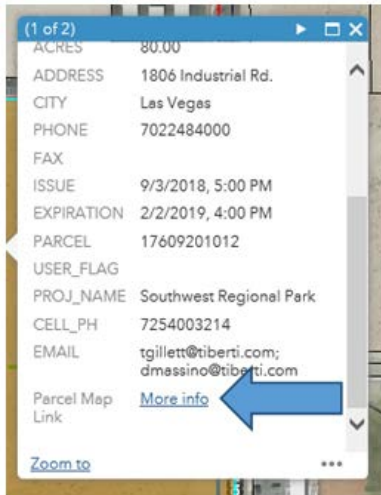
- Press enter.
- The program takes you to the parcel number, DCOP, address, or cross streets.
(If you search by the parcel number or DCOP, the program outlines the area in blue.)
- As you can see below, a portion of the parcel is permitted as indicated by the color brown.



- When you click on the permitted area,
 - the program outlines the area in blue, and
 - an information box including all of the permit information pops up.



- A link to the assessor's parcel map is included at the bottom of the information box
- Click on [More info](#) to pull up the assessor's parcel map

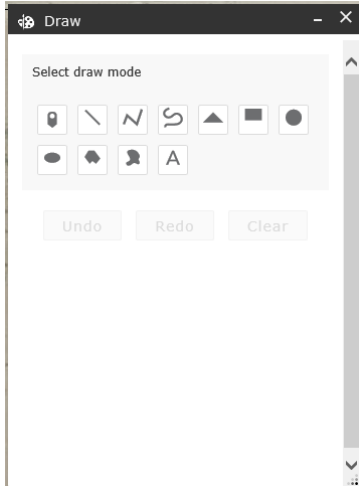


Using the Drawing Tools

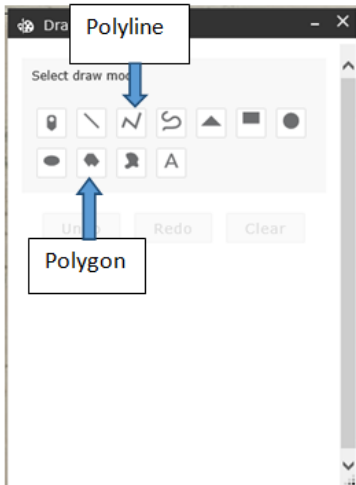
1. Click on the Draw icon at the bottom of the page.



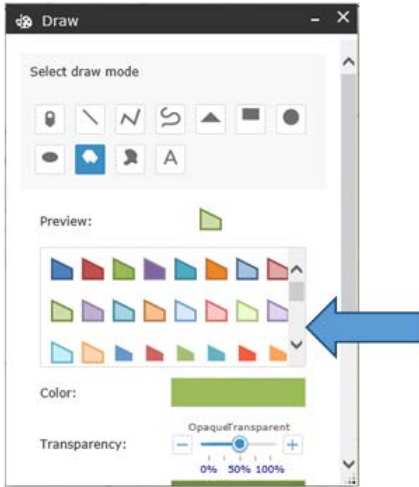
The Draw Options box appears.



2. Select the draw mode.
For DCOPs, the most common draw mode is polygon or polyline.

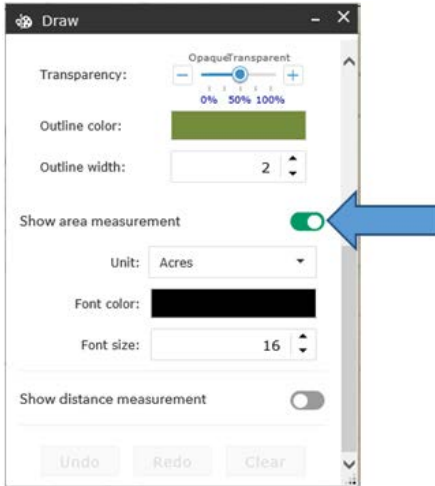


3. Select the color.

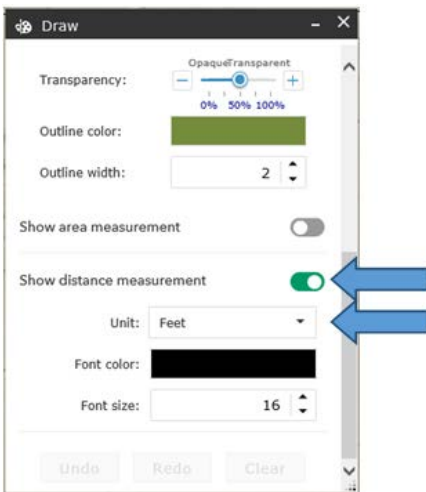


4. Select an option to show the measurement on the drawing.

a. If drawing a polygon, select "show area measurement."



b. If drawing a polyline,
i. select "show distance measurement," and
ii. change Unit to Feet.



5. Left click on the screen to begin.
6. Continue clicking until the entire area being permitted is drawn.
7. Double click to complete the drawing and return a measurement.

STEP 5

STEP 6



STEP 6

STEP 7



Printing the Screenshot

To print the screenshot, use the snipping tool available on your computer or use the print function included with the program.

SNIPPING TOOL

1. Open the snipping tool available on your computer.
2. Select new and drag your cursor over the screen to capture the image.

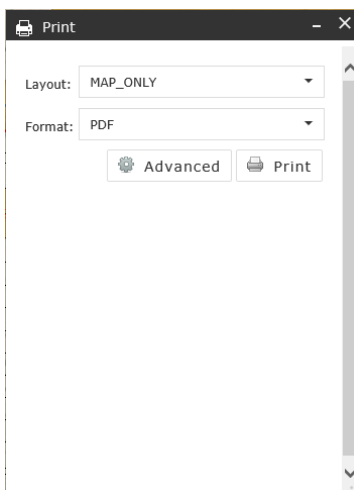


PRINT TOOL

1. Click on the Print icon at the bottom of the page.

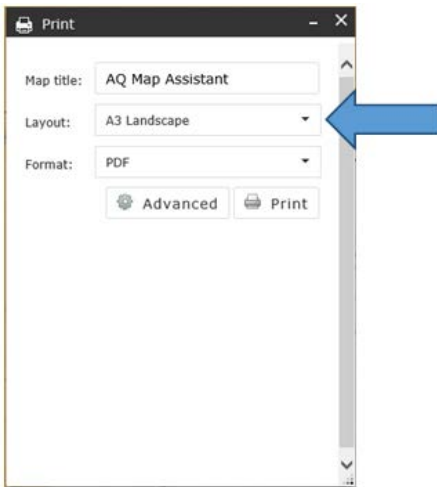


2. The Print options box appears.

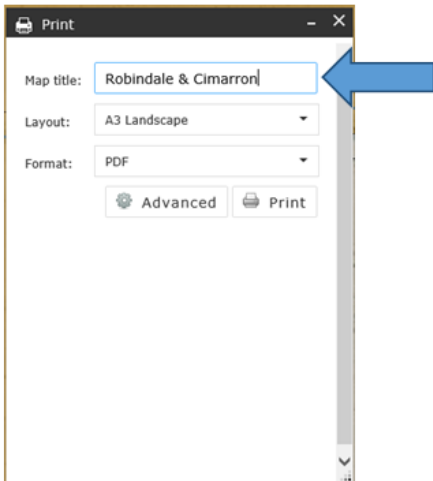


MAP_ONLY is the default set for the layout.

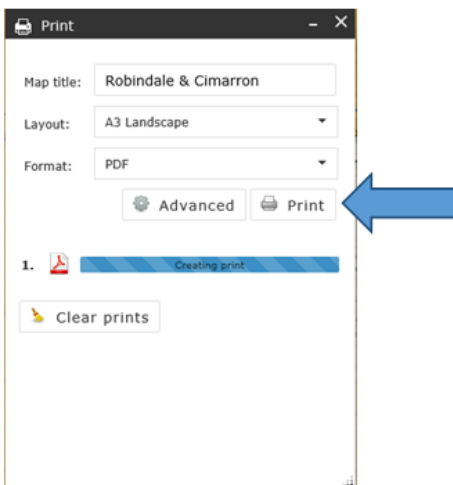
3. To view the location easier, change the layout option to A3 Landscape.



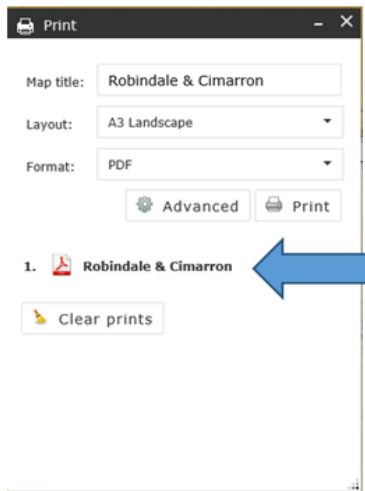
4. Change the Map Title.



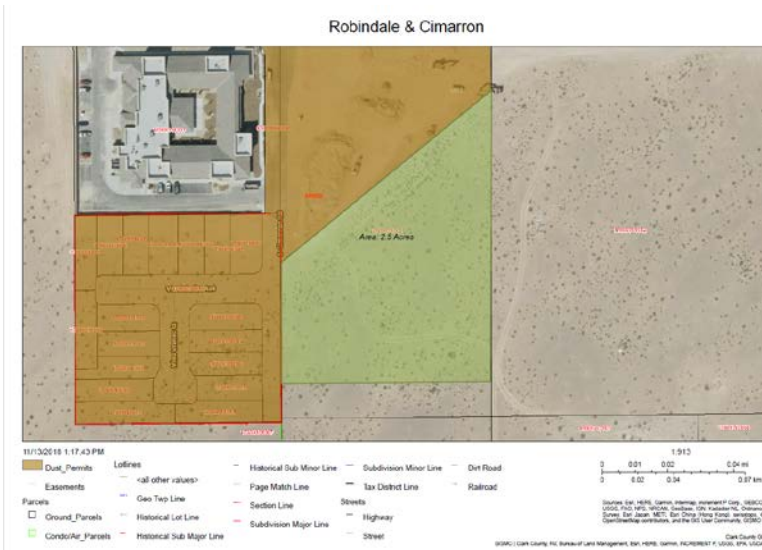
5. Click on the Print icon.



The program will create a PDF.



6. Click on the PDF and the following will pop up.



7. Print the map and submit with the Dust Control Operating Permit.

Make sure the entire area that needs to be permitted is included and clearly visible on the map.